



## POWER KIT IP68

The only re-enterable and reusable IP68 kit. Can easily be used for ceiling mounted or recessed applications!

The most versatile, safe solution to fully protect connections in boxes with an IP68 degree of protection. Thanks to **Magic Power**, the newly developed, fast cross-linking, safe and reliable, extremely sticky self-agglomerating gel with very high dielectric, thermal and elastic characteristics, sealing is guaranteed in all type of installation, including submerged. The Power Kit IP68 solution is the only product of its kind! Not only because the insulation can be used in two different ways, both as a traditional "pour" in the box and as a "cross linked and sticky" product (cross linking first), but also because, thanks to its re-enterability and re-usability, it helps you save time and money!

### ADVANTAGES

- ▶ Magic Power Gel is not-classified as hazardous under the CLP Directive.
- ▶ Complete Kit for a perfect connection IP68.
- ▶ Insulated with Magic Power Gel the innovative self-amalgamating gel.
- ▶ Can also be used in severe environmental conditions.
- ▶ Suitable for very high depths.
- ▶ No waste.
- ▶ No shelf life.



#### Electrical performance:

- CEI EN 50393 as applicable
- Class 2 in accordance with CEI 64-8.

🔹 Gel: UL 94-HB 

🌡 Working temperature: 90°

🌡 Gel operating temperature:  
-60°C / +200°C

🌊 Fully submersible

🔧 Can be used underground

🌿 Halogen-free Gel

🔥 Self-extinguishing and resistant  
to abnormal heat and fire:  
Glow Wire Flammability Index at +960° C  
according to EN60695-2-12

IP68  
OFFICIALLY  
TESTED | IMQ

#### WHERE CAN YOU USE THE POWER KIT?

In pools, tanks, submerged pumps, outdoor lighting systems, underground, port piers, marinas, sewer systems, and with temporary connections such as with lights, street vendors, etc.

#### HOW DO YOU USE THE POWER KIT?

The insulation can be poured into the box (Pour!) or, for special applications, cross linked in the measuring jug and applied around the connection (Stick!). Mix the Magic Power gel in a 1:1 ratio in the supplied measuring jug. The gel will cross link in less than 15 minutes.

#### NO WASTE

The cross linked gel which remains on the bottom after mixing can be easily removed from the jug and saved for later use.

Chose the **POUR** or **STICK** method most suited for your needs

**POUR**



You can use the Magic Power gel supplied in the two-component bottle in a 1:1 ratio by simply pouring it after mixing into the box supplied in the kit, to protect and seal internal connections. The gel cross links in just 15 minutes, but the box can be energised immediately.

**RE-ENTER AND RE-USE**



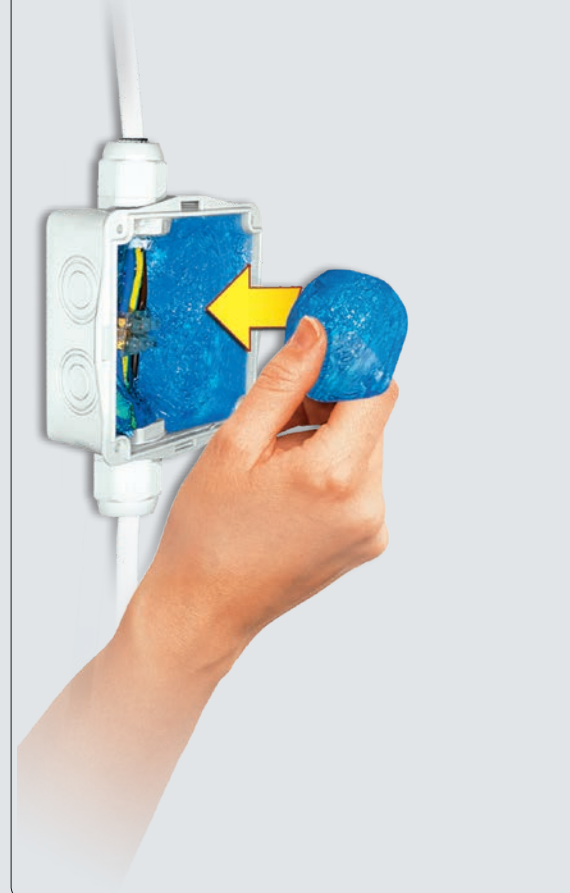
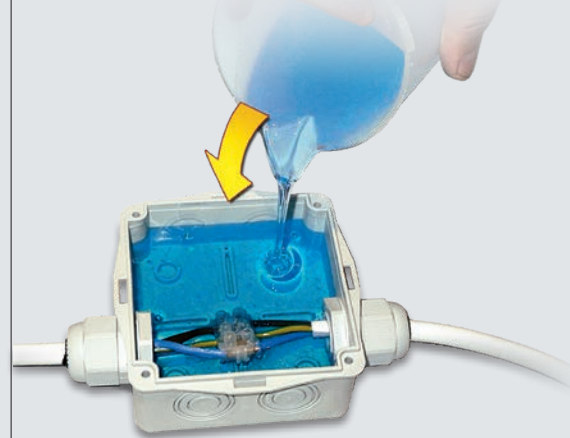
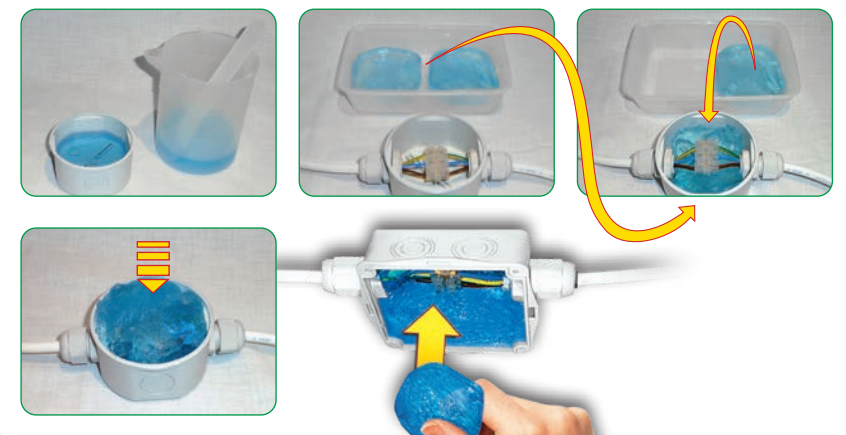
Thanks to Magic Power Gel, the box can be **re-opened, inspected** and **re-insulated** all using the original installed product.

**STICK**



Pour the components in the measuring jug, mix and leave to cross link (about 15 minutes). Remove the insulation and position it in small parts around the connection so that it is fully covered. Insulation saved from previous mixes can of course be utilised.

**IN A HURRY? ADVERSE WEATHER CONDITIONS? PREPARE YOUR INSULATION BEFORE INSTALLING IT!**





### WHAT ARE THE ADVANTAGES TO USING THE POWER KIT?

- The insulation is extremely sticky and self-amalgamating, with no shelf life, it is non-toxic and it adheres to everything while leaving your hands clean and dry.
- The kit does not cause waste: insulation left over in the measuring jug can be saved for later use.
- Re-enterable and reusable, saving time and money.
- The supplied box has pre-marked holes.
- Compatible with Magic Gel.
- A slight exothermic reaction (temperature increase of about 3°C) speeds up cross linking in cold weather conditions.
- Even protects boxes mounted on the ceiling to IP68 if using the "stick" method. Could also use left over product from previous installations.
- Insulation can be pre-prepared: at home, at work or in your car and then applying it once cross linked, saving time when you're in a hurry or in adverse weather conditions.

### SOME LEFT OVER? SAVE IT!



Left over gel that has already cross linked can be easily removed from the measuring jug and saved for later use.



PRODUCT / Item	Box	Insulating filler
<b>POWER KIT 65</b> POWER-65	Ø 65 x h 35 mm + 2 cable glands PG16 / caps	Single two-component bottle 1 small jug - 1 spatula in wood
<b>POWER KIT 80</b> POWER-80	Ø 80 x h 40 mm + 3 cable glands PG16 / caps	Single two-component bottle 1 small jug - 1 mixing spatula
<b>POWER KIT 100</b> POWER-100	100 x 100 x h 50 mm + 3 cable glands M25 x 1,5 / caps	Single two-component bottle 1 small jug - 1 mixing spatula
<b>POWER KIT 120</b> POWER-120	120 x 80 x h 50 mm + 3 cable glands M25 x 1,5 / caps	Single two-component bottle 1 small jug - 1 mixing spatula